

# East Sussex, South Downs and Brighton & Hove Waste and Minerals Development Framework

## Guide to the Draft Waste and Minerals Plan

October 2011





## Introduction

### What is this document?

This document is a guide to the Draft Waste and Minerals Plan. It sets out the framework of the Plan and why the policies are needed. In addition to this guide, there is a shortened version of the plan where you can find extra supporting information and more detail about the policies and background studies that have informed the approaches.

### What is the Waste and Minerals Plan?

The Waste and Minerals Plan will set out the strategic policy decisions for waste and minerals in the Plan Area, which consists of East Sussex, Brighton and Hove and an area of the South Downs National Park.

Existing waste and minerals planning policy is contained in the adopted East Sussex and Brighton & Hove Waste Local Plan (2006), and Minerals Local Plan (1999). The policies from both have been 'saved' which means they will remain in force until replaced by policies in the new Waste and Minerals Development Framework.

The Waste and Minerals Development Framework will be made up of:

- The Plan;
- A waste sites document; and
- A minerals sites document.

### Key dates for the Waste & Minerals Plan

The table below summarises the current timetable for key stages of the Plan. The sites documents will be prepared once the Plan has been adopted.

#### Key dates for the Waste & Minerals Plan

Stage	Date
Preferred Strategy consultation	21 October 2009 to 25 January 2010
Draft Plan consultation	27 October 2011 to 8 December 2011
Formal consultation on the soundness of the Plan	Winter/Spring 2012
Submission of the Plan to Government	Summer 2012
Public Examination	Autumn 2012
Adoption	January 2013

## Introduction

After the consultation, on the Draft Waste and Minerals Plan, all comments will be considered in the preparation of the final document (known as the Submission Document) that will be sent to Government for examination. The examination is an independent assessment to ensure that the Plan satisfies the requirements of regulations and legislation, and is 'sound'. There will be a chance in Spring 2012 to comment on the 'soundness' of the Submission document and those comments will be taken into account by the independent Planning Inspector as part of the Examination which is anticipated to be held in Autumn 2012.

### Information Papers

As well as the detailed background information, the Plan is supported by ten Information Papers which provide explanatory information related to the key issues addressed. These are:

Information Paper 1 - The Future Need for Waste Management

Information Paper 2 - The Future Need for Minerals Production and Management

Information Paper 3 - Sustainable Waste Management

Information Paper 4 - Waste Management Methods and Technologies

Information Paper 5 - Land Disposal

Information Paper 6 - Spatial Portrait of East Sussex, Brighton & Hove and the South Downs

Information Paper 7 - Hazardous and Radioactive Waste

Information Paper 8 - Transportation of Waste and Minerals

Information Paper 9 - Climate Change and Waste and Minerals

Information Paper 10 - Waste Water and Sewage Sludge

## Introduction

### How do I comment on the draft Plan?

This is your chance to let us know what you think about the draft Plan. Copies of all the main documents will be available online and at local District/Borough Council offices. Copies of the consultation document will be available at main libraries across East Sussex and Brighton and Hove.

All comments must be received by 8 December 2011 to ensure that they can be taken into account. Your comments may be made available to view, so please do not include any information that you consider to be confidential. We will hold your name, address and contact details for use in future waste and minerals consultations.

### On-line Consultation

We strongly encourage you to view the full plan and send in your comments online, via the website <http://consult.eastsussex.gov.uk>, as this will help make significant savings of resources and paper.

Anyone can view the documents online, but to submit comments you will need to register at <http://consult.eastsussex.gov.uk>. Please contact us if you have any difficulty with the website.

### Other ways to send us your comments:

By email	<a href="mailto:wasteandmineralsdf@eastsussex.gov.uk">wasteandmineralsdf@eastsussex.gov.uk</a>
By post	Economy, Transport & Environment, East Sussex County Council, C4 Waste and Minerals Policy (AP), FREEPOST (LW43), Lewes, BN7 1BR

### For general queries you can contact:

East Sussex County Council	Tel: 01273 481846
Brighton & Hove City Council	Tel: 01273 292505

## Policies in the draft Plan

### What is in the plan?

Section	Policy Number	A brief description of the policy and why it is needed	Page - Full Plan	Page - Short Plan
<b>Overarching Strategy</b>	Vision	A view of waste and minerals by about 2030.	23	10
	Objectives	The Objectives set out the main aims of the Plan.	24	11
	Local Strategy Statement	The LSS sets out how we will work with neighbouring authorities to make sure our Plan is deliverable and appropriate at a 'larger than local' level.	26	13
	WMP1	The policy sets out criteria for determining waste and minerals development in the National Park and highlights major applications, soft sand quarries, small scale development and backfilling redundant quarries. The policy is to ensure that development is sustainable and appropriate in the National Park.	34	14
	WMP2a-e	5 sub policies which cover waste prevention, turning waste into a resource (including management targets for recycling and recovery), production of energy from waste, minimising Construction Waste, and, management provision in new development. The whole policy is to make sure that waste is dealt with in accordance with the Waste Hierarchy i.e. prevention first, prepare for re-use, recycle, other recovery and disposal as last resort).	37	15
	WMP3	Policy to ensure sustainable provision and use of minerals by seeking a steady supply supporting recycled materials, allowing primary extraction where this is not possible but only if to meet the County's apportionment of regional need.	47	19
<b>Providing for Waste</b>	WMP4	Policy WMP4a identifies future need for recycling and recovery capacity in order to avoid any adverse effects of over-provision. Policy WMP4b has additional provision to "compensate" for waste being disposed outside the Plan area.	49	21

## Policies in the draft Plan

Section	Policy Number	A brief description of the policy and why it is needed	Page - Full Plan	Page - Short Plan
	WMP5	To maintain existing provision of waste management facilities, existing waste sites and allocation in statutory plans will be safeguarded. Waste Consultation Areas will be identified in Waste Sites document.	55	24
	WMP6	In order to support the Plan, Policy WMP 6a steers waste recycling and recovery facilities to be provided within broad Areas of Focus. Sites identified in future Waste Sites document will conform to this strategy. Policy WMP 6b gives more detailed criteria for waste development.	57	25
	WMP7	The Plan does not propose any new provision for land disposal. If such an application was submitted, Policy WMP 7a gives the criteria against which the proposal would be considered. Policy WMP 7b provides criteria to determine an application solely for inert waste which might be used for beneficial uses. Policy WMP 7c provides guidance on the management of landfill gas.	62	26
	WMP8	In order to manage the Plan area's hazardous and low level radioactive waste, Policy WMP 8a safeguards existing capacity and provides criteria for determining new proposals. Policy 8b specifically gives criteria to determine applications to cater for low level radioactive waste.	70	30
	WMP9	To allow for waste water treatment capacity to be developed as appropriate, Policy 9 provides criteria for determining applications for new development.	75	32
Providing for Minerals	WMP10	The Government has apportioned national requirements for aggregates and the South East Plan divides this requirement between sub areas. Policy WMP 10 identifies how the East Sussex and Brighton & Hove apportionment will be met.	77	33
	WMP11	To safeguard reserves of gypsum in the Plan area, Policy WMP 11 maintains the existing mines and supports the use of alternatives.	81	34

## Policies in the draft Plan

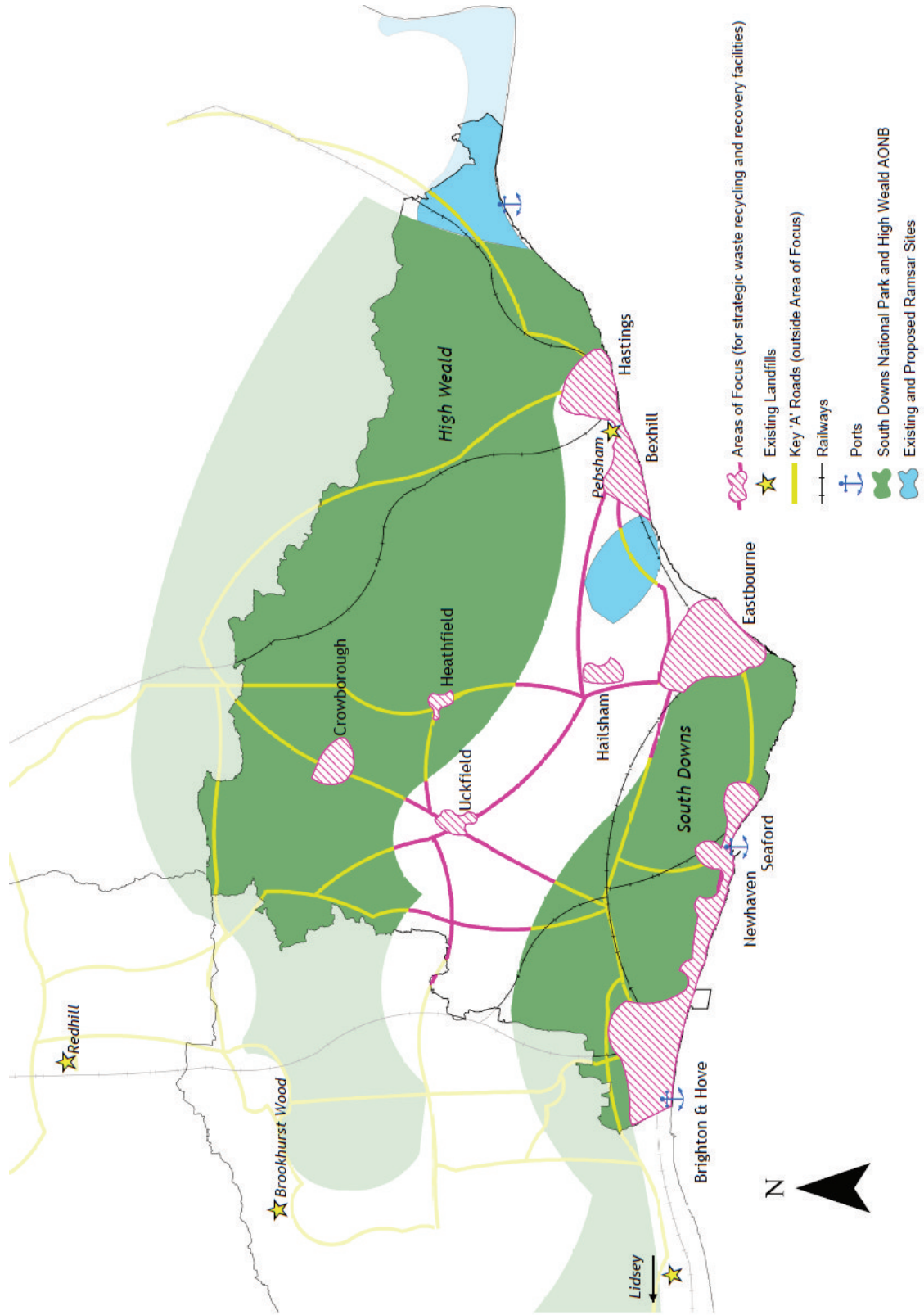
Section	Policy Number	A brief description of the policy and why it is needed	Page - Full Plan	Page - Short Plan
	WMP12	To safeguard sufficient supplies of brick clay, continued production at existing brickworks is supported.	83	34
	WMP13	To safeguard mineral resources in the Plan area, Policy WMP 13 identifies the sites that are subject to safeguarding and where the Authorities expect to be consulted on any non-minerals development that might affect them.	85	35
	WMP14	Policy WMP 14 safeguards railheads and wharves. These facilities are crucial to the transport of important minerals.	88	36
	WMP15	In order to provide a framework for any potential oil and gas applications, Policy WMP 15 defines criteria for determining this form of development.	90	36
<b>Overarching Policies</b>	WMP16	Restoration of minerals sites and land disposal facilities is important for environmental and amenity reasons. Policy WMP 16 sets out criteria for assessing requirements.	92	38
	WMP17	To minimise the environmental and amenity effects of the transport of waste and minerals, Policy WMP17 promotes the use of rail and water transport as an alternative to road transport.	94	38
	WMP18	Criteria to support to co-location of complementary facilities is identified in Policy 18. This should achieve operational or cost efficiencies, or transport benefits.	95	39
	WMP19	To foster engagement between developers of waste and minerals facilities, and host communities, Policy WMP 19 identifies a pro-active approach.	97	40
	WMP20	Policy WMP 20 identifies opportunities for sustainable waste management and minerals production in other developments. This will improve efficiencies and maximise opportunities.	99	40
	WMP21	Policy WMP 21 provides criteria for determining applications seeking to alter or expand waste facilities. This supports other policies within the Plan.	101	41

## Policies in the draft Plan

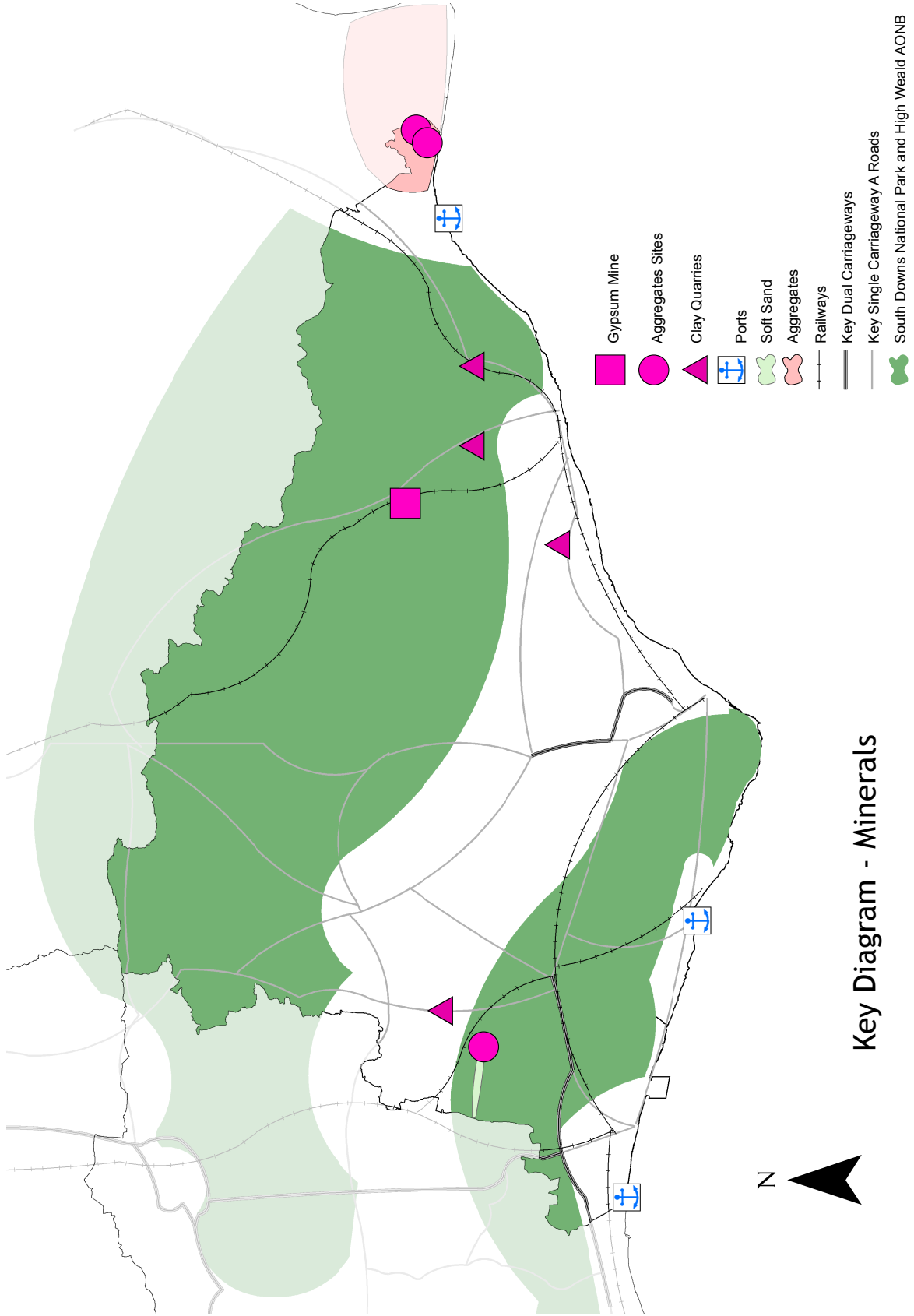
Section	Policy Number	A brief description of the policy and why it is needed	Page - Full Plan	Page - Short Plan
<b>Development Management Policies</b>	WMP22	In order to provide guidance on design and operational aspects, Policy WMP 22a identifies criteria for urban locations, new development sites or places on the urban fringe, and rural sites. Policy WMP 22b covers the operation of sites.	102	43
	WMP23	Tackling climate change is a priority and waste and minerals developments should seek to mitigate and adapt to climate change. Policy WMP 23a identifies the measures for mitigation and adaptation. Policy WMP 23b gives guidance on resource and energy use.	106	45
	WMP24	Policy WMP 24 lists criteria associated with general amenity considerations in order to protect local communities from the potential negative impacts of waste and minerals development.	108	46
	WMP25	To ensure that proposals fully address the site specific issues related to road transport, Policy WMP 25 lists criteria to be considered in determining waste and minerals development.	109	47
	WMP26	There are many important built and natural environmental assets within the Plan area. Policy WMP 26 sets out how to conserve and enhance these assets.	110	47
	WMP27	Policy WMP 27 sets out how proposals should take account of flood risk and protection of groundwater.	112	48
<b>Implementation and Monitoring</b>		How we will make sure the plan is effective	114	50
<b>Saved Policies</b>		Policies to be saved from the Waste Local Plan (2006) and the Minerals Local Plan (1999).	129	51
<b>Replaced Policies</b>		A table setting out which policies are replaced by the Plan.	130	52
<b>Glossary</b>		Although we try to minimise the amount of jargon used in the document, the Glossary provides an explanation for technical words we have used.	139	60

# Policies in the draft Plan

## Key Diagram- Waste



# Policies in the draft Plan



**Waste and Minerals Policy Team**

Planning Service – Transport & Environment  
East Sussex County Council  
County Hall  
St Anne's Crescent  
Lewes  
East Sussex  
BN7 1UE

**01273 481846****Planning Strategy & Projects**

Brighton & Hove City Council  
Hove Town Hall  
Norton Road  
Hove  
East Sussex  
BN3 3BQ

**01273 292505**